

The

GW EXTREMISM TRACKER

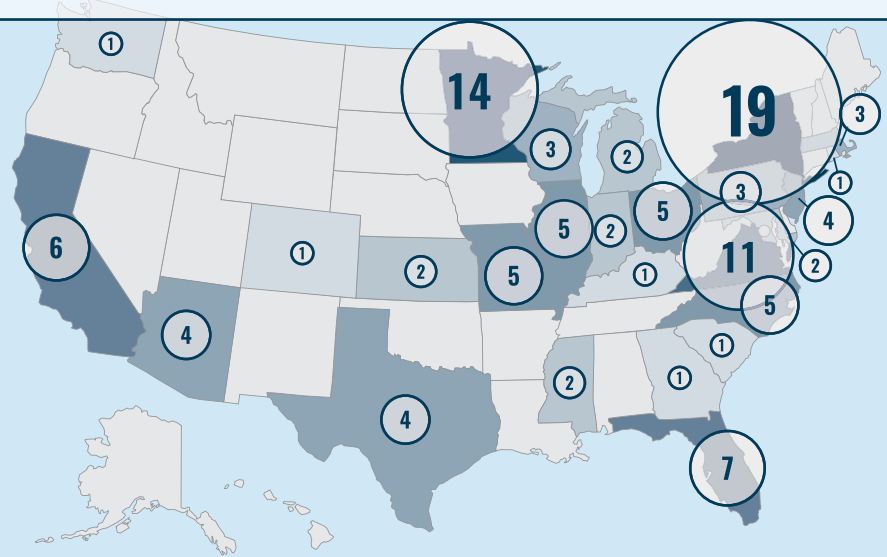
new research & analysis from the  
Program on Extremism

THE GEORGE WASHINGTON UNIVERSITY

# ISLAMIC STATE IN AMERICA

**115** individuals have been charged in the U.S. with offenses related to the Islamic State (also known as IS, ISIS, and ISIL)—since the first arrests in March 2014. (As of February 28, 2017)

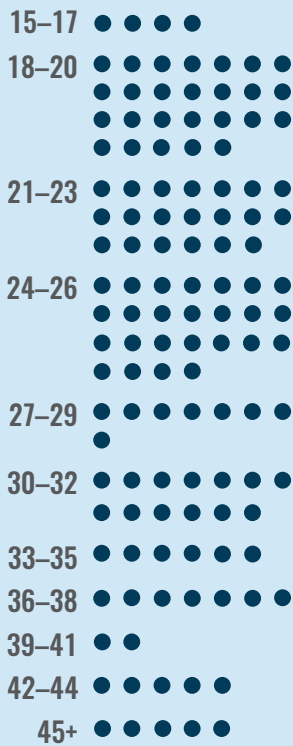
The FBI has stated that there are active IS-related investigations in all 50 states. To date, 26 states have had at least one charge within their borders:



## AGE

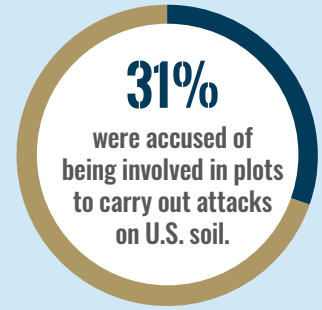
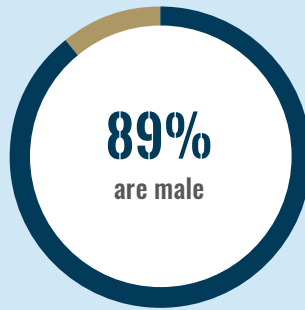
**27** average age at charging

● = 1 person

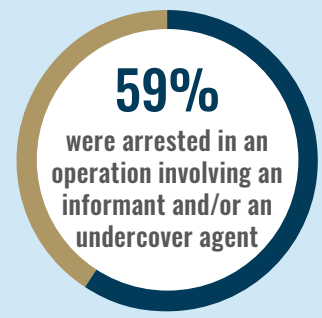
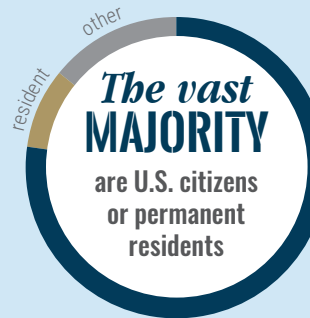


## DEMOGRAPHICS & CHARGES

## NUMBERS BY STATE



**67** individuals have pleaded or were found guilty.



**13.2 YEARS**  
average sentence

Read the full report: **ISIS IN AMERICA**  
FROM RETWEETS TO RAQQA



Find more at [www.cchs.gwu.edu/program-extremism](http://www.cchs.gwu.edu/program-extremism) or follow @gwupoe on Twitter